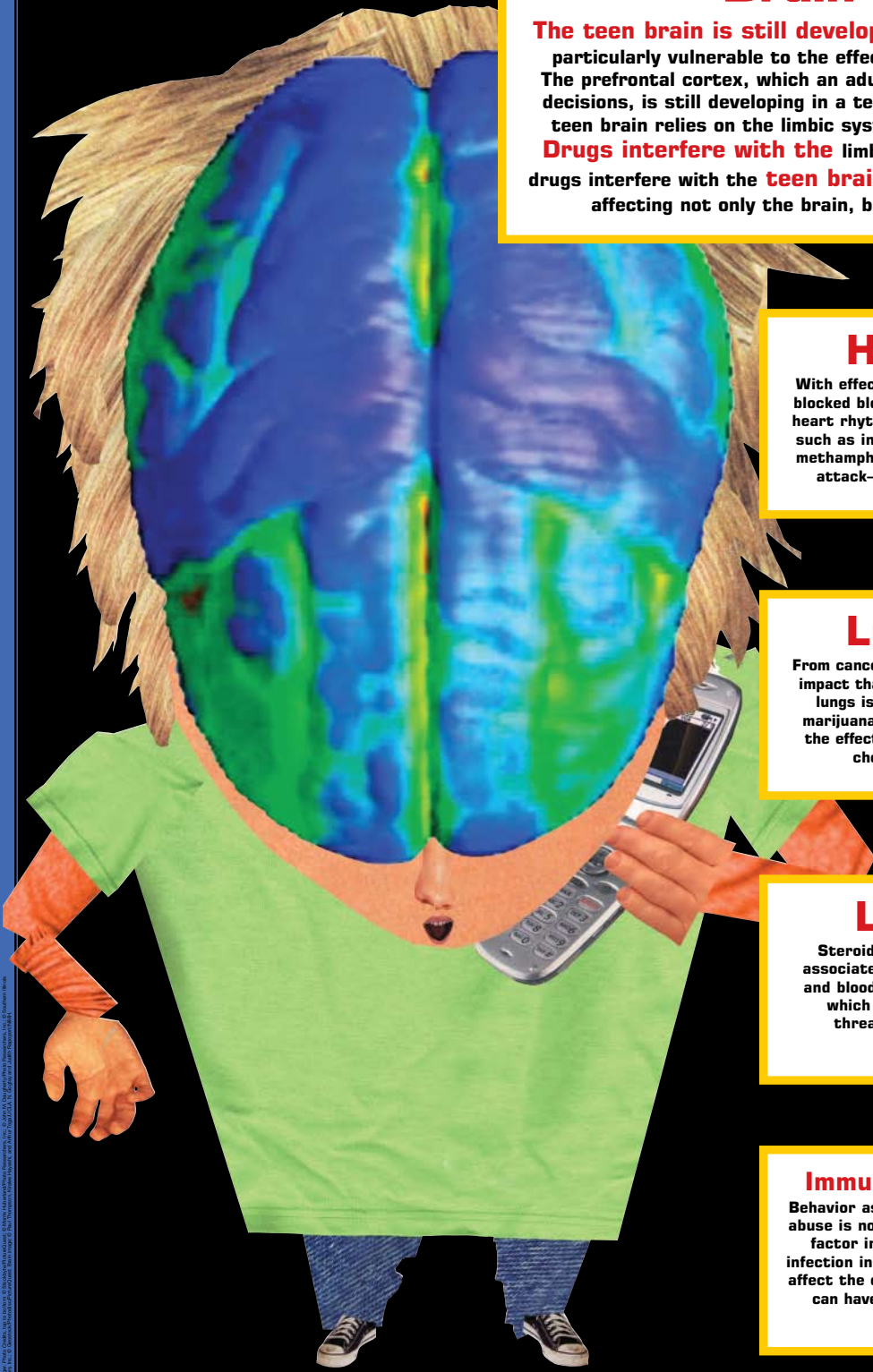




HEADS UP
REAL NEWS
ABOUT DRUGS
AND YOUR BODY
www.scholastic.com/HEADSUP

The Teen Brain: Under Construction



Brain



The teen brain is still developing, so it is particularly vulnerable to the effects of drugs. The prefrontal cortex, which an adult uses to make decisions, is still developing in a teen. Because of this, the teen brain relies on the limbic system to make decisions. **Drugs interfere with the** limbic system. Additionally, drugs interfere with the **teen brain's** natural development, affecting not only the brain, but the entire body.

Heart



With effects that range from blocked blood flow to disrupted heart rhythms, the abuse of drugs such as inhalants, steroids, cocaine, or methamphetamine can result in a heart attack—even in a very fit athlete.

Lungs



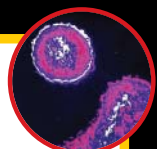
From cancer to black lung, the impact that drugs have on the lungs is serious. Tobacco and marijuana users' lungs turn black from the effects of tar, one of thousands of chemicals in these drugs.

Liver



Steroid abuse has been associated with liver tumors and blood-filled cysts—either of which can rupture, causing life-threatening internal bleeding.

Immune System



Behavior associated with drug abuse is now the single largest factor in the spread of HIV infection in the United States. Drugs affect the decision-making process, which can have life-altering consequences.